



## H204 Casa Rey de las Viñas- Floor Plan description

Casa Rey de las Viñas has two “regular” floors and then some rooms in levels “in between”, which makes the house very charming. This structure has been chosen to maintain the original structure of the house. We have this drawing where the numbers start from “the top”, so the highest numbers are in the ground floor.

The “green beds” are included to show, where it is possible to install extra beds. The house has a base capacity of 22 beds included in the price and 4 extra beds available on demand against supplement. Baby beds can be provided on demand free of charge. The owners can also help with bicycle rental.

## THE GARDEN AND POOL AREA WITH OUTDOOR KITCHEN

The house has a big garden with the big swimming pool. The swimming pool is fenced to protect small children and has also a special part for small children.

At the end of the swimming pool, there is a very nice terrace with outdoor kitchen and chill out area. The view is very nice.

## GROUND FLOOR:

On first floor, you find 2 bedrooms and 2 bathrooms. There is also the access to the garden.

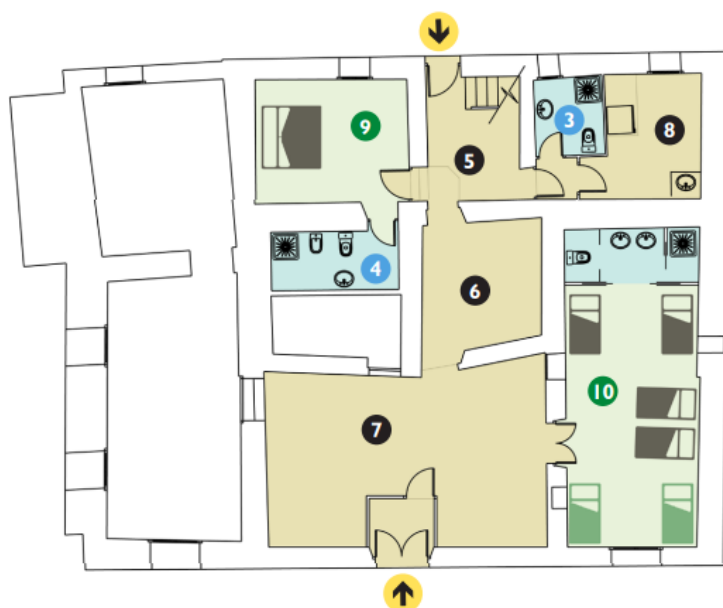
### 2 bedrooms and 2 bathrooms

Bedroom (9) with double bed and Bathroom (4) ensuite

Bedroom (10) with 4 single beds and space for 2 more

Laundry room (8) with bathroom (3)

Entrance from the street (5), main entrance from the garden (7) and a distribution room (6)



## Planta baixa (P0)

9	Habitació doble amb bany - Avis	LLit de matrimoni
4	Cambra de bany hab n°. 9	Dutxa a peu plà
3	Cambra de bany	Dutxa a peu plà
10	Habitació quàdruple amb bany adaptat	LLits individuals Possibilitat de posar + llits
5	Entrada posterior	
6	Distribuidor	
7	Entrada principal	
8	Sala rentadora / secadora / planxa / llums / alarma	

## FIRST FLOOR:

On the first floor, you find 6 bedrooms and 3 bathrooms. Then there is the cozy common room and the authentic kitchen.

### 6 bedrooms and 2 (3) bathrooms

Bedroom (1) with double bed

Bedroom (2) with double bed

Bedroom (3) with two single beds (set as double bed) and space for an extra bed

Bedroom (4) with two single beds (set as double bed) and space for an extra bed

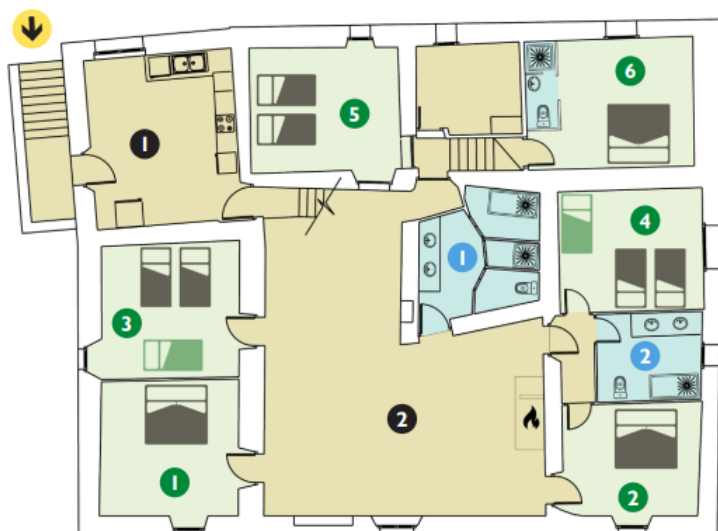
Bedroom (5) with two single beds (set as double bed)

Bedroom (6) with double bed and Bathroom (no number) ensuite

Bathroom (1) with two showers and two sinks

Bathroom (2) with one shower and two sinks

Kitchen (1), sitting room with dining table (2) and fireplace



### Planta 1era (P1)

1	Habitació doble - Pares	LLit de matrimoni
2	Habitació doble - Maria	LLit de matrimoni
3	Habitació doble / triple - Marcel	LLits individuals
4	Habitació doble / triple - Martí	LLits individuals
5	Habitació doble - Bru	LLits individuals
6	Habitació doble amb bany - Roser	LLit de matrimoni
1	Cuina	
2	Sala d'estar i menjador	
1	Cambra de bany	
2	Cambra de bany	

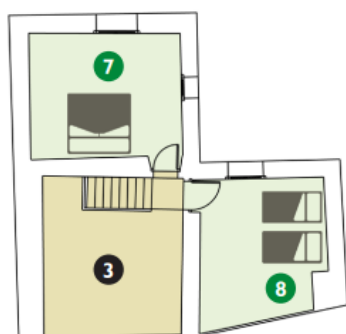
## SECOND FLOOR

The second floor is more like a loft with two bedrooms, one with double bed and one with two single beds. There is also a room with board games.

### 2 bedrooms

Bedroom (7) with double bed

Bedroom (8) with two single beds



### Planta 2ona (P2)

7	Habitació doble - Marc	LLit de matrimoni
8	Habitació doble - LLuc	LLits individuals
3	Biblioteca / Wifi	